



# BroadSpec<sup>™</sup>

*See More. Know More.*

Unprecedented hyperspectral data capture  
with the highest spectral range



*BroadSpec<sup>™</sup> hyperspectral radiometers deliver an ultra-broad spectral range from 400-2400 nm in a single device, along with the highest possible data quality. BroadSpec<sup>™</sup> overcomes prior cost and logistical limitations to provide broad spectral bandwidth at consumer-friendly prices.*



## Higher Quality Data

More spectral bands and  
the highest bit depth in its class



## Lower Cost

Replace multiple devices  
with a single system

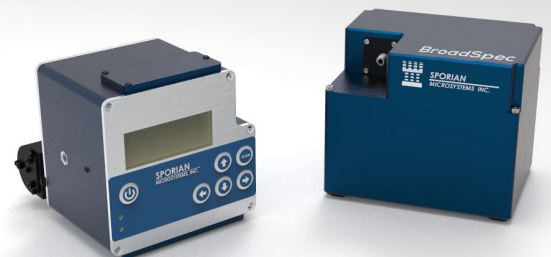


## Ultra Portable

Compact and lightweight with a  
ultra-long-lasting battery and a  
single camera

## Applications

- Precision Agriculture
- Food Processing & Quality Inspection
- Process Control & Materials Identification
- Earth Sciences & Environmental Monitoring
- Government/Defense
- Biotech & Medical



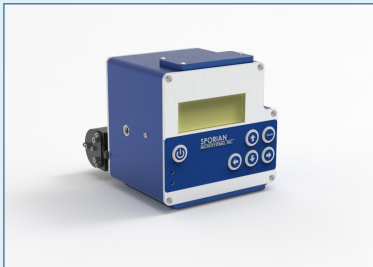
*continued...*



# BroadSpec™

*See More. Know More.*

## BroadSpec™ Products



### BroadSpec™ Mobile

BroadSpec Mobile is an easy-to-use, ultra-portable solution that offers the highest integrated continuous spectral range in a compact device with extra-long battery life.

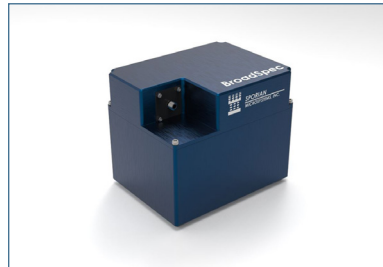
**WAVELENGTH RANGE**  
400-2400 nm when cooled

**BODY SIZE**  
3.5"x4.7"x4.7"

**SPECTRAL BANDS**  
75

**MAX IMAGING SPEED**  
90 frames/sec

**SPECIAL FEATURES**  
Battery operated for hand-held field use



### BroadSpec™ Lab

BroadSpec Lab provides information previously unattainable, with a continuous spectral range of 400-2600 nm for user operated or automated applications.

**WAVELENGTH RANGE**  
400-2600 nm

**BODY SIZE**  
3.6" x 3.9" x 4.75"

**SPECTRAL BANDS**  
250

**MAX IMAGING SPEED**  
90 frames/sec

**SPECIAL FEATURES**  
PC Software and USB interface



### BroadSpec™ UAS

BroadSpec UAS is an easy-to-use, small UAS-portable solution that offers the highest continuous spectral range in a compact device with extra-long battery life.

**WAVELENGTH RANGE**  
400-2400 nm

**BODY SIZE**  
3.1" x 3.5" x 4"

**SPECTRAL BANDS**  
75

**MAX IMAGING SPEED**  
90 frames/sec

**SPECIAL FEATURES**  
Weight: < 1.3 lbs